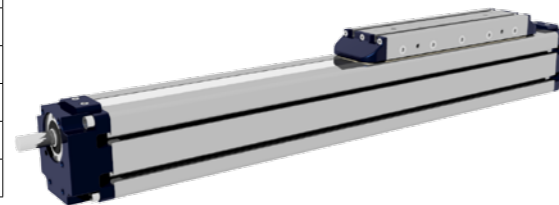


Serie MTV | MTV Series | Baugröße MTV

Attuatori lineari a vite con ricircolo di sfere e guida a ricircolo di sfere
Spindle actuator with recirculating ball bearing guide
Spindelachse mit Kugelumlaufführung

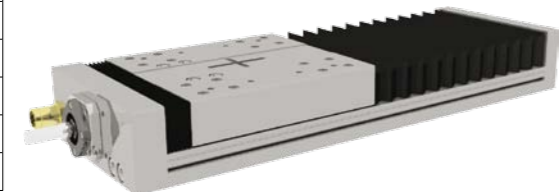
| Taglia Size Baugröße | mm | 42x45 55x60 80x85 |
|---|-----|-----------------------|
| Velocità max Max. speed Max. Geschwindigkeit | m/s | 1,5 |
| Corsa max Max. stroke length Max. Hub | mm | 1500 |
| Passo vite Pitch Spindlesteigung | mm | 5 10 16 20 |
| Forza di spinta Max feed force Max Vorschubkraft | N | 3500 ÷ 16000 |
| Momenti My/Mz Torque My/Mz Momente My/Mz | Nm | 55 ÷ 450 |
| Momento flettente Mx Bending moment Mx Momente Mx | Nm | 20 ÷ 80 |
| Ripetibilità Repeatability Wiederholgenauigkeit | mm | ± 0,02 |



Serie MTL | MTL Series | Baugröße MTL

Tavole lineari di precisione con vite a ricircolo di sfere
Linear tables with recirculating ball bearing guide and spindle drive
Schienenführungstische mit Kugelrollspindell

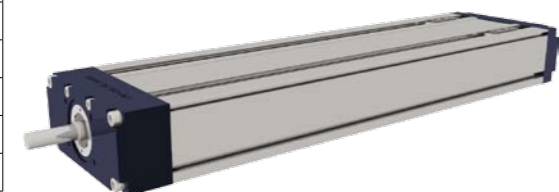
| Taglia Size Baugröße | mm | 155-225 |
|---|-----|------------------|
| Velocità max Max. speed Max. Geschwindigkeit | m/s | 1,5 |
| Corsa max Max. stroke length Max. Hub | mm | 1500 |
| Passo vite Pitch Spindlesteigung | mm | 5 10 16 20 |
| Forza di spinta Max feed force Max Vorschubkraft | N | 7800 ÷ 15500 |
| Momenti My/Mz Torque My/Mz Momente My/Mz | Nm | 430 ÷ 1400 |
| Momento flettente Mx Bending moment Mx Momente Mx | Nm | 200 ÷ 670 |
| Ripetibilità Repeatability Wiederholgenauigkeit | mm | ± 0,02 |



Serie MUK | MUK Series | Baugröße MUK

Unità lineari con vite e guide a ricircolo di sfere
Linear units with recirculating ball bearing guide and spindle drive
Lineareinheiten mit Kugelrollspindell

| Taglia Size Baugröße | mm | 40x90 50x110 65x145 |
|---|-----|--------------------------|
| Velocità max Max. speed Max. Geschwindigkeit | m/s | 1,5 |
| Corsa max Max. stroke length Max. Hub | mm | 1500 |
| Passo vite Pitch Spindlesteigung | mm | 5 10 16 20 |
| Forza di spinta Max feed force Max Vorschubkraft | N | 3600 ÷ 13500 |
| Momenti My/Mz Torque My/Mz Momente My/Mz | Nm | 430 ÷ 1400 |
| Momento flettente Mx Bending moment Mx Momente Mx | Nm | 160 ÷ 670 |
| Ripetibilità Repeatability Wiederholgenauigkeit | mm | ± 0,02 |



PNEUVATEC GmbH
Jenfelder Str. 55a
22045 Hamburg

Tel.: 040-609 287 18
Mail: info@pneuvatec.de
Web: www.pneuvatec.de

Moving towards the future

Catalogo attuatori lineari a cinghia
Tooth belt linear actuator
Linearantrieb mit Zahnriemen katalog

Serie MTB | MTB Series | Baugröße MTB

Attuatori lineari a cinghia dentata e guida a ricircolo di sfere
Toothed belt linear actuator with recirculating ball bearing guide
Zahnriemenachse mit Kugelumlauführung

| Taglia Size Baugröße | mm | 42x42 55x55 80x80 |
|---|-----|-----------------------|
| Velocità max Max. speed Max. Geschwindigkeit | m/s | 3 |
| Corsa max Max. stroke length Max. Hub | mm | 6800 |
| Cinghia Belt Zahnriemen | | ATL5 |
| Forza di spinta Max feed force Max Vorschubkraft | N | 480 ÷ 1650 |
| Momenti My/Mz Torque My/Mz Momente My/Mz | Nm | 55 ÷ 450 |
| Momento flettente Mx Bending moment Mx Momente Mx | Nm | 20 ÷ 80 |
| Ripetibilità Repeatability Wiederholgenauigkeit | mm | ± 0,05 |



Serie MTF | MTF Series | Baugröße MTF

Attuatori lineari a cinghia dentata e guida a ricircolo di sfere
Toothed belt linear actuator with recirculating ball bearing guide
Zahnriemenachse mit Kugelumlauführung

| Taglia Size Baugröße | mm | 42x75 |
|---|-----|--------|
| Velocità max Max. speed Max. Geschwindigkeit | m/s | 3 |
| Corsa max Max. stroke length Max. Hub | mm | 6800 |
| Cinghia Belt Zahnriemen | | ATL5 |
| Forza di spinta Max feed force Max Vorschubkraft | N | 680 |
| Momenti My/Mz Torque My/Mz Momente My/Mz | Nm | 110 |
| Momento flettente Mx Bending moment Mx Momente Mx | Nm | 18 |
| Ripetibilità Repeatability Wiederholgenauigkeit | mm | ± 0,05 |



Serie MTF 42 | MTF 42 Series | Baugröße MTF42

Attuatori lineari a cinghia dentata e guida a ricircolo di sfere bidirezionali
Bi-directional toothed belt linear actuator with recirculating ball bearing guide
Bi-Direktional Zahnriemenachse mit Kugelumlauführung

| Taglia Size Baugröße | mm | 42x75 |
|---|-----|--------|
| Velocità max Max. speed Max. Geschwindigkeit | m/s | 3 |
| Corsa max Max. stroke length Max. Hub | mm | 34000* |
| Cinghia Belt Zahnriemen | | ATL5 |
| Forza di spinta Max feed force Max Vorschubkraft | N | 340 |
| Momenti My/Mz Torque My/Mz Momente My/Mz | Nm | 110 |
| Momento flettente Mx Bending moment Mx Momente Mx | Nm | 18 |
| Ripetibilità Repeatability Wiederholgenauigkeit | mm | ± 0,05 |



* Per ogni carrello | For each carriage | Für alle Schlitten

Serie MTR | MTR Series | Baugröße MTR

Attuatori lineari a cinghia dentata con guida a rotelle
Toothed belt linear actuator with roller guides
Zahnriemenachse mit Laufrollenführung

| Taglia Size Baugröße | mm | 42x42 55x55 80x80 |
|---|-----|-------------------------|
| Velocità max Max. speed Max. Geschwindigkeit | m/s | 6 ÷ 8 |
| Corsa max Max. stroke length Max. Hub | mm | 6800 |
| Cinghia Belt Zahnriemen | | ATL5 |
| Forza di spinta Max feed force Max Vorschubkraft | N | 480 ÷ 1650 |
| Momenti My/Mz Torque My/Mz Momente My/Mz | Nm | My: 25÷450 Mz: 75÷550 |
| Momento flettente Mx Bending moment Mx Momente Mx | Nm | 5 ÷ 50 |
| Ripetibilità Repeatability Wiederholgenauigkeit | mm | ± 0,05 |



Serie MTF 42R | MTF 42R Series | Baugröße MTF 42R

Attuatori lineari a cinghia dentata con guida a rotelle
Toothed belt linear actuator with roller guide
Zahnriemenachse mit Laufrollenführung

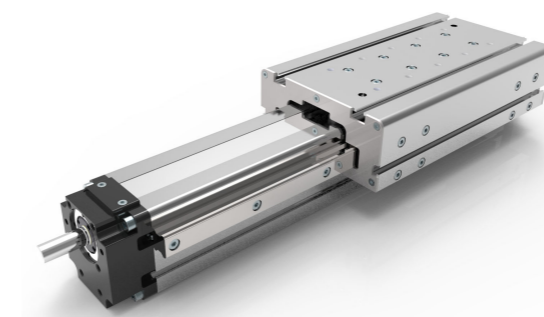
| Taglia Size Baugröße | mm | 42x75 |
|---|-----|----------------|
| Velocità max Max. speed Max. Geschwindigkeit | m/s | 6 |
| Corsa max Max. stroke length Max. Hub | mm | 5850 |
| Cinghia Belt Zahnriemen | | ATL5 |
| Forza di spinta Max feed force Max Vorschubkraft | N | 680 |
| Momenti My/Mz Torque My/Mz Momente My/Mz | Nm | My 55 Mz 160 |
| Momento flettente Mx Bending moment Mx Momente Mx | Nm | 18 |
| Ripetibilità Repeatability Wiederholgenauigkeit | mm | ± 0,05 |



Serie MVS | MVS Series | Baugröße MVS

Attuatori lineari a vite e con doppia guida esterna a ricircolo di sfere
Spindle actuator with external double recir-culating ball bearing guide
Spindelachse mit doppelter Kugelumlauführung

| Taglia Size Baugröße | mm | 42x75 |
|---|-----|------------------|
| Velocità max Max. speed Max. Geschwindigkeit | m/s | 1,5 |
| Corsa max Max. stroke length Max. Hub | mm | 1500 |
| Passo vite Pitch Spindlsteigung | mm | 5 10 16 20 |
| Forza di spinta Max feed force Max Vorschubkraft | N | 3500 ÷ 16000 |
| Momenti My/Mz Torque My/Mz Momente My/Mz | Nm | 275 ÷ 750 |
| Momento flettente Mx Bending moment Mx Momente Mx | Nm | 395 ÷ 620 |
| Ripetibilità Repeatability Wiederholgenauigkeit | mm | ± 0,02 |



Serie MTS | MTS Series | Baugröße MTS

Attuatori lineari a cinghia dentata con doppia guida esterna a ricircolo di sfere
Toothed belt linear actuator with external double recir-culating ball bearing guide
Zahnriemenachse mit doppelter Kugelumlauführung

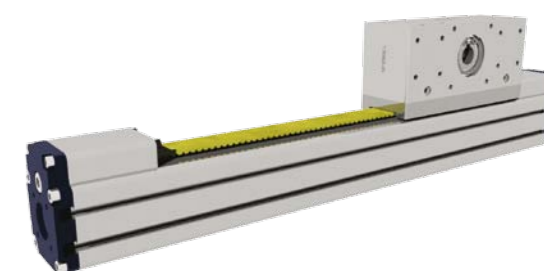
| Taglia Size Baugröße | mm | 55x55 80x80 |
|---|-----|---------------|
| Velocità max Max. speed Max. Geschwindigkeit | m/s | 3 |
| Corsa max Max. stroke length Max. Hub | mm | 6500 |
| Cinghia Belt Zahnriemen | | ATL5 |
| Forza di spinta Max feed force Max Vorschubkraft | N | 680 ÷ 1650 |
| Momenti My/Mz Torque My/Mz Momente My/Mz | Nm | 275 ÷ 750 |
| Momento flettente Mx Bending moment Mx Momente Mx | Nm | 395 ÷ 620 |
| Ripetibilità Repeatability Wiederholgenauigkeit | mm | ± 0,05 |



Serie MTZ-L | MTZ-L Series | Baugröße MTZ-L

Attuatori lineari verticali a cinghia dentata con guida a ricircolo di sfere
Toothed belt linear actuator with recirculating ball bearing guide for vertical application
Senkrechte Zahnriemenachse mit Kugelumlauführung

| Taglia Size Baugröße | mm | 42x42 55x55 |
|---|-----|---------------|
| Velocità max Max. speed Max. Geschwindigkeit | m/s | 1 |
| Corsa max Max. stroke length Max. Hub | mm | 1500 |
| Cinghia Belt Zahnriemen | | ATL5 |
| Forza di spinta Max feed force Max Vorschubkraft | N | 480 ÷ 800 |
| Momenti My/Mz Torque My/Mz Momente My/Mz | Nm | 20 ÷ 40 |
| Momento flettente Mx Bending moment Mx Momente Mx | Nm | 120 ÷ 220 |
| Ripetibilità Repeatability Wiederholgenauigkeit | mm | ± 0,05 |



Serie MTZ-S | MTZ-S Series | Baugröße MTZ-S

Attuatori lineari verticali a cinghia dentata con doppia guida esterna a ricircolo di sfere
Toothed belt linear actuator with external double recirculating ball bearing guide for vertical application
Senkrechte Zahnriemenachse mit doppelter Kugelumlauführung

| Taglia Size Baugröße | mm | 55x55 |
|---|-----|--------|
| Velocità max Max. speed Max. Geschwindigkeit | m/s | 1 |
| Corsa max Max. stroke length Max. Hub | mm | 1500 |
| Cinghia Belt Zahnriemen | | ATL5 |
| Forza di spinta Max feed force Max Vorschubkraft | N | 800 |
| Momenti My/Mz Torque My/Mz Momente My/Mz | Nm | 480 |
| Momento flettente Mx Bending moment Mx Momente Mx | Nm | 265 |
| Ripetibilità Repeatability Wiederholgenauigkeit | mm | ± 0,05 |

